

SUPER VINYROCK

-JAPANESE STANDARD QUALITY-

| | |
|------------------|------------------------------------|
| Product name | SUPER VINYROCK |
| Paint type | Water based acrylic resin |
| Use | Interior & Exterior |
| Gloss type | Matt-type |
| Color match | JPMA Color card & other card |
| Coating amount | 0.11-0.13kg/m ² · 1coat |
| No of Coat | 2-3coat |
| Tools | Brush , Roller |
| Dilution | clean water |
| Dilution ratio | 10-20% |
| Touch Dry | 30min |
| Hard Dry | 2h |
| Coating Interval | 2h |
| Specific gravity | 1.50±0.03 |
| Package | 20kg、4kg |
| Sealer | VINYROCK SEALER CONC |



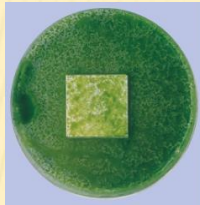
Make your color!



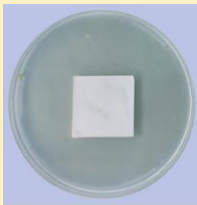
PT.ROCKPAINT INDONESIA
ROCKPAINT.CO.LTD

Japanese Standard

Anti Alga Test(4weeks)



No Anti Alga Type



SUPER VINYROCK

Anti Mold Test(2weeks)



No Anti Mold Type



SUPER VINYROCK

Good Hiding power



Indonesian
Standard paint

SUPER
VINYROCK

SUPER VINYROCK is a high quality exterior and interior paint which meets Japanese Standard. It has Fine durability, excellent anti-alga/mold ability, low odor.

Also, it provides various color which makes your lifestyle better and valuable.

Variety of colors



Choose your taste color and Enjoy your lifestyle!

JPMA COLOR CARD 624colors
by Japan paint manufactures association

| Process | Paint & Method | | Dilution ratio | | | Coating amount Kg/m ² · 1coat | Coating Interval |
|------------------------|--|-------------------------------------|----------------|----------------------------|----------------------------|---|---------------------|
| Surface Preparation | 1) Remove completely Efflorescence, Laitance, Dust, Dirt etc.. by wire brush. | | | | | | |
| | 2) Dry well until water content below 10% and pH below 9.5, then start painting. | | | | | | |
| Under coat | Product | VINYROCK SEALER CONC | Clean water | Brush Roller Airless | 75-100% | 0.06 - 0.10kg | 3hours < |
| | Tools | Brush, Roller, Airless | | | | | |
| | No. of coat | 1coat | | | | | |
| | Coating amount | 180 - 300m ² /18kg/1coat | | | | | |
| Top coat | Product | SUPER VINYROCK | Clean water | Brush Roller Airless | 10-20% 10-20% 15-25% | 0.11-0.13kg | 2hours < |
| | Tools | Brush, Roller | | | | | |
| | No. of coat | 2 – 3 coat | | | | | |
| | Coating amount | 154 - 182m ² /20kg/1coat | | | | | |